

# ART HISTORY TIMELINE



## Ancient Art

**Date:** around 6000–3000 BCE to 400–600 CE

**Features:** symbolism, monumental architecture

**Example:** Great Pyramid of Giza (c. 2580–2560 BCE)

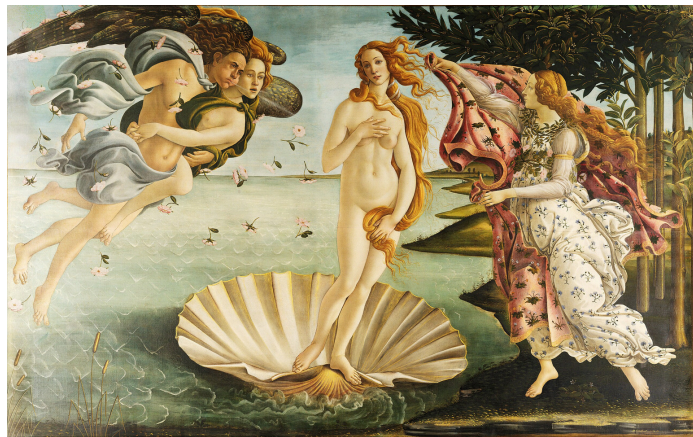
## Medieval Art

**Date:** 2nd–16th c.

**Features:** religious themes, elaborate ornamentation

**Movements:** Early Christian, Byzantine, Romanesque, Gothic

**Example:** *The Mass of Saint Gregory* (1480) by anonymous



## Pre-Modern Art

**Date:** 14th–19th c.

**Features:** realism, individualism

**Movements:** Renaissance, Baroque, Rococo, Neoclassicism, Romanticism, Realism

**Example:** *The Birth of Venus* (circa 1485) by Sandro Botticelli

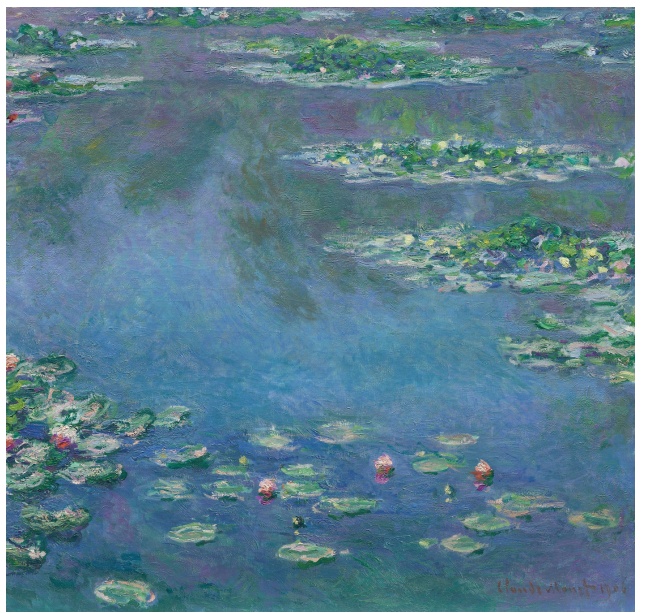
## Modern Art

**Date:** 19th–early 20th c.

**Features:** light, atmosphere, abstraction, experimentation

**Movements:** Impressionism, Post-Impressionism, Symbolism, Fauvism, Expressionism, Cubism, Futurism

**Example:** *Water Lilies* (1906) by Claude Monet



## Post-Modern Art

**Date:** mid-to-late 20th c.

**Features:** subconscious exploration, absurdity

**Movements:** Dadaism, Surrealism, Bauhaus, Abstract Expressionism, Pop Art

**Example:** *Optophone* (circa 1922) by Francis Picabia